



Shropshire Providers Consortium



Support provided

“pooling the experience, skills and knowledge of members to deliver seamless services for the people of Shropshire”

Contact us

01743 367758

<http://www.shropshireprovidersconsortium.co.uk/>

SPC, Room GN97, Shirehall, Abbey Forge, Shrewsbury, SY2 6ND



Shropshire Providers Consortium
Delivering Services with added social value

The Independent Single Point Contracting Vehicle for Shropshire & Beyond

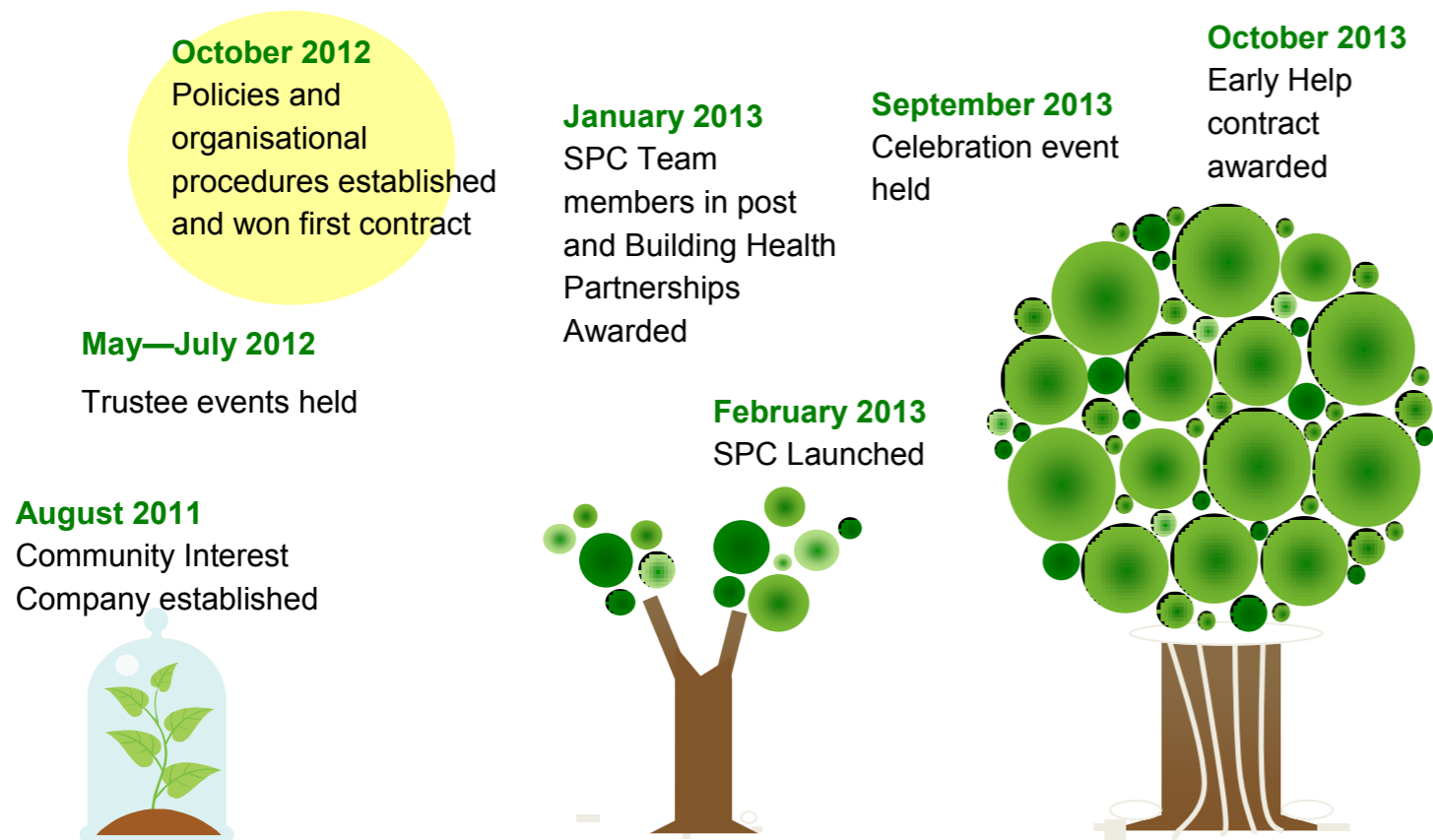
Aim and Objectives

The aim of Shropshire Providers Consortium (SPC) is to provide access to a single point of contracting with and on behalf of voluntary and community organisations in Shropshire that is consistently of high quality and that is fair and sustainable. SPC is the only independent model working for and on behalf of the Voluntary & Community Sector in Shropshire.

Objectives

- To deliver public service and other contracts or funding opportunities
- To support and enable members to bid for and win contracts
- To enable joint working either for contracts or within other aspects of the work of the consortium e.g. peer support, shared services
- To provide structures and high level skills to members to enable them to secure contract opportunities
- To provide research and needs analysis to members and to support tendering, impact measurement and evaluation functions
- To build the capacity of the members to be able to be part of a supply chain of the consortium
- To be sustainable in the long term and to support the sustainability of the

Timeline



Year 1 Achievements

Since 1st April 2013, **71 opportunities** have been promoted. **13 applications** have been made, 5 of those have been won, with 4 decisions awaited. SPC has achieved **in partnership** a year 1 income of **£926,450** for its members. As Contract Manager, Julie works with **10 commissioners** (including Shropshire's CCG, Shropshire Council, Telford & Wrekin Council, and Tier 1 providers). SPC has provided **2 training events** on social value and supported the sharing of **back office support** including finance and administration. SPC is **collating the latest information** on TUPE, Pensions, Unit Costs and processes for negotiating with Prime 1 contractors to keep members informed and prepare training. 2013 saw the joint establishment of ShropShare with Impact Consultancy: **collaborating** to bring the VCSE Sector and local business together. SPC has built relationships with border counties, preparing for regional tenders.

Members

28 full members

6 associate members

1 affiliate member



Full members are ready and able to deliver services. Associate members need some support to meet membership requirements and become a full member. Affiliate membership is reserved for large providers who may not be eligible for all the support and membership benefits SPC offers local VCS organisations.