

Annual Report



Adopt the Terms of Reference

Review and progress report

Fol 1 minutes update



Supporting Members



- Re-branding
- 16 Forums
- More Events
- Key partner
- More information
- Support in accessing funding



Re-branding and growing



County Sports Partnership
Training Providers Forum
Mental Health Forum
Heritage Forum

Visual Arts Network

Social Care Forum Partners for Social Enterprise

Older Peoples Assembly Criminal Justice Forum

IAG Forum Green Shropshire xchange

Shropshire Infrastructure Partnership

Children and Young Peoples Summit

Community Based Transport

Pan Disability Forum Housing Support Forum

More demands...More ...More ...more..



- Themed events
- More information
- More networking
- More opportunities to promote service



Themed Events



Big Debate on Welfare Reform



Information and Networking



- E mail weekly updates
- Regular website posts
- Bi-monthly newsletters
- Allow for networking in meetings
- FOI themselves



Promoting members services



- Market day events
- COPE events



Modernisation programme



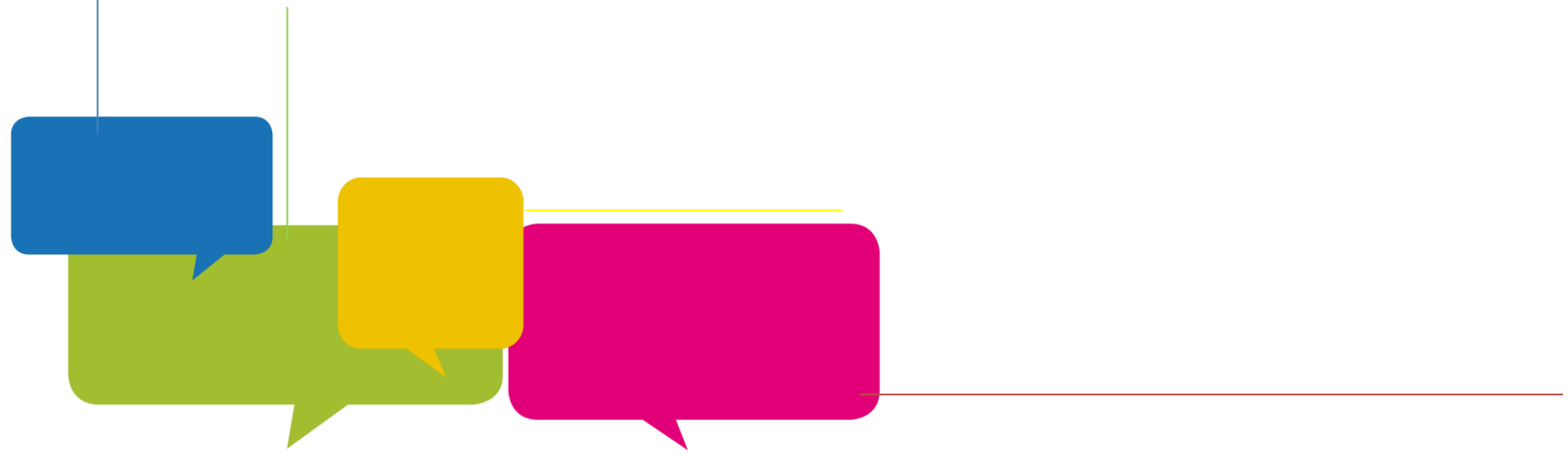
- Task Groups
- SPC
- Extended Partnerships
- Community Hubs
- Compact Review



Task Groups



- SPC
- Extended Partnerships
- Community Hubs
- Compact Review



SPC



Launch Event
4th February



Extended Partnerships



- Private Sector
- Health Sector



Private Sector



Measurable Impact
£10,200 in Kind and pro-bono
support for 7 organisations



Health Sector



Upto 50k
Building Health
Partnerships



Community Hubs



- Mayfair
- Ludlow
- Whitchurch
- Oswestry



Compact Review



- Joint Working Group
- MOU with CCG
- Shortly to sign with Police Commissioners

